

Solar Pump Inverter

High Quality Reliable Power Range 750W~710KW

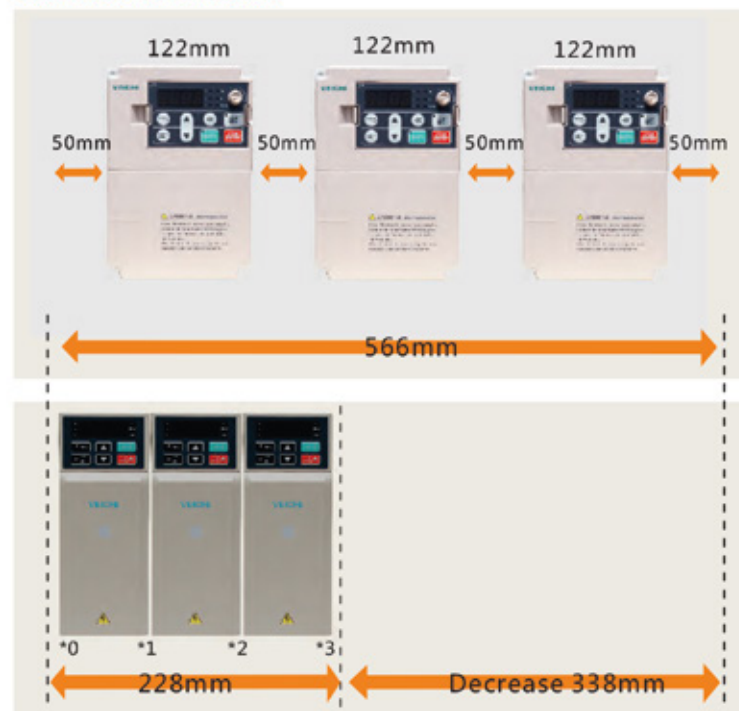


Product Features

New Appearance, Narrow Body Structure

- Book narrow body structure, maximum space saving 60% .
- New keyboard design, simple appearance and easy operation .
- European terminal blocks, convenient and efficient wiring .

380V 2.2kW demonstration



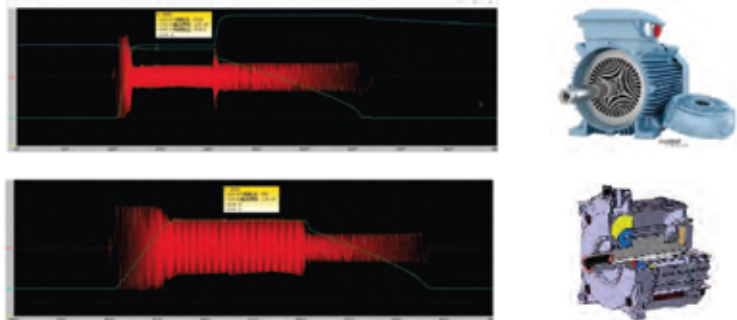
Easy To Debug And Rich In Expansion

- Professional PC software, one-key reading of debugging parameters .
- Virtual oscilloscope reads data accurately .
- Support ModBus, SPI, GPRS, PG card and other expansion interfaces .



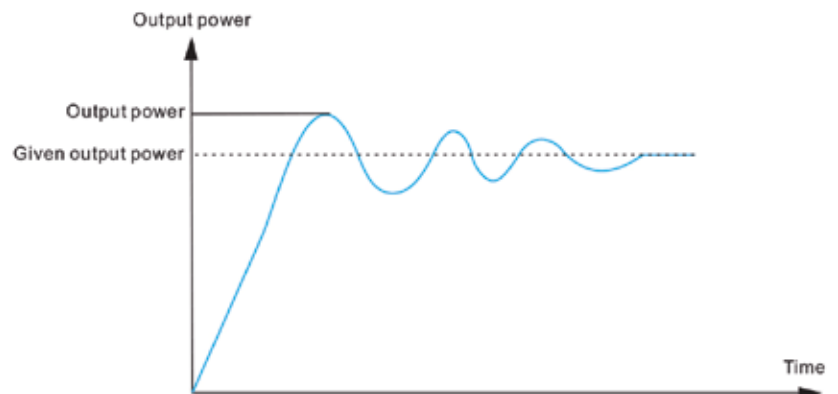
Top Level Algorithm Software

- Suitable for various types of pumps such as synchronous, asynchronous, single-phase and synchronous reluctance pumps .
- International leading self-tuning algorithm to accurately measure motor parameters .
- High broadband current vector, 12 times of field weakening high precision output .



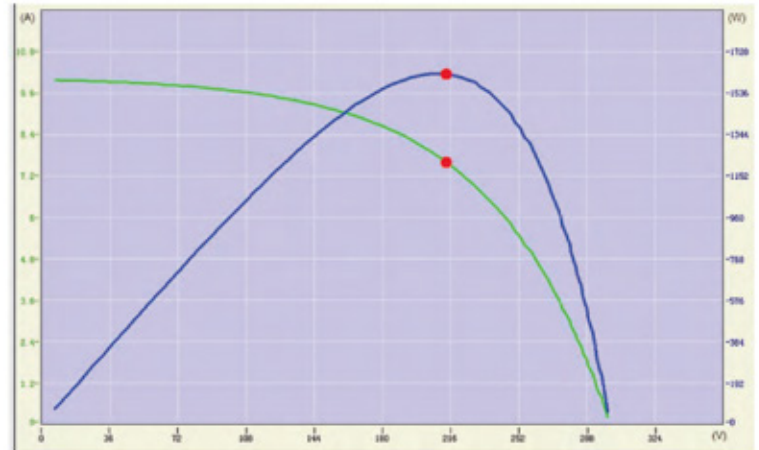
Accurate Control Of Output Power

- Accurately adjust the head and flow rate by controlling the output frequency.
- Control water pressure protection system pipelines and valves .
- Protect the pump motor to extend its service life .



PV Specific Functions

- Mppt function, real-time adjustment of the best output frequency .
- Complete pump protection function to extend the life of the pump .
- Custom PQ curve, users understand the cumulative flow and power generation .
- AC/DC mixed input, timing, water pump cleaning and other functions .



High MPPT Efficiency Max. is 99.9%

Smart IOT

- Support GPS positioning, wifi data connection, offline data storage .
- Unattended, real-time, remote control .
- Big data analysis, calculation of cumulative power generation and flow .



One Key To Clean The Pump

When the pump impeller is blocked due to sediment, the inverter has built-in water pump cleaning function, which can clean foreign matter and impurities in the water pump with one button.



Technical Specification

Total solar panels Voc input range	D1 series: 60~400V DC
	D3 series: 150~450V DC
	D5 series: 250~780V DC
	T3 series: 350~780V DC
AC input voltage/frequency range	D1 series: Single/three phase 110Vac 50/60Hz
	D3 series: Single/three phase 220/230Vac 50/60Hz
	D5 series: Three phase 380Vac 50/60Hz
	T3 series: Three phase 380Vac 50/60Hz
Output voltage/frequency range	D1 series: 110~230V AC 0~600Hz 0.75~1.5KW
	D3 series: 150~230V AC 0~600Hz 0.75~4KW
	D5 series: 230~460V AC 0~600Hz 0.75~30KW
	T3 series: 230~460Vac 0~600HZ 37~500KW
Overload capacity	1. 150% rated current 60s
	2. 180% rated current 10s
	3. 200% rated current 0.5s
MPPT efficiency	Up to 99.8%
Solar pump inverter protection	1. Low speed protection
	2. Dormancy function
	3. Undervoltage/Overvoltage protection
	4. Input/output phase lose protection
	5. Phase-Phase/ Phase to ground short circuit protection
Analog signal input/output	0~20mA/0~10V
Multifunction digital terminal	5X input 1X output
Build-in relay control	Control relay opening and closing according to inverter status
Warranty period	24 months

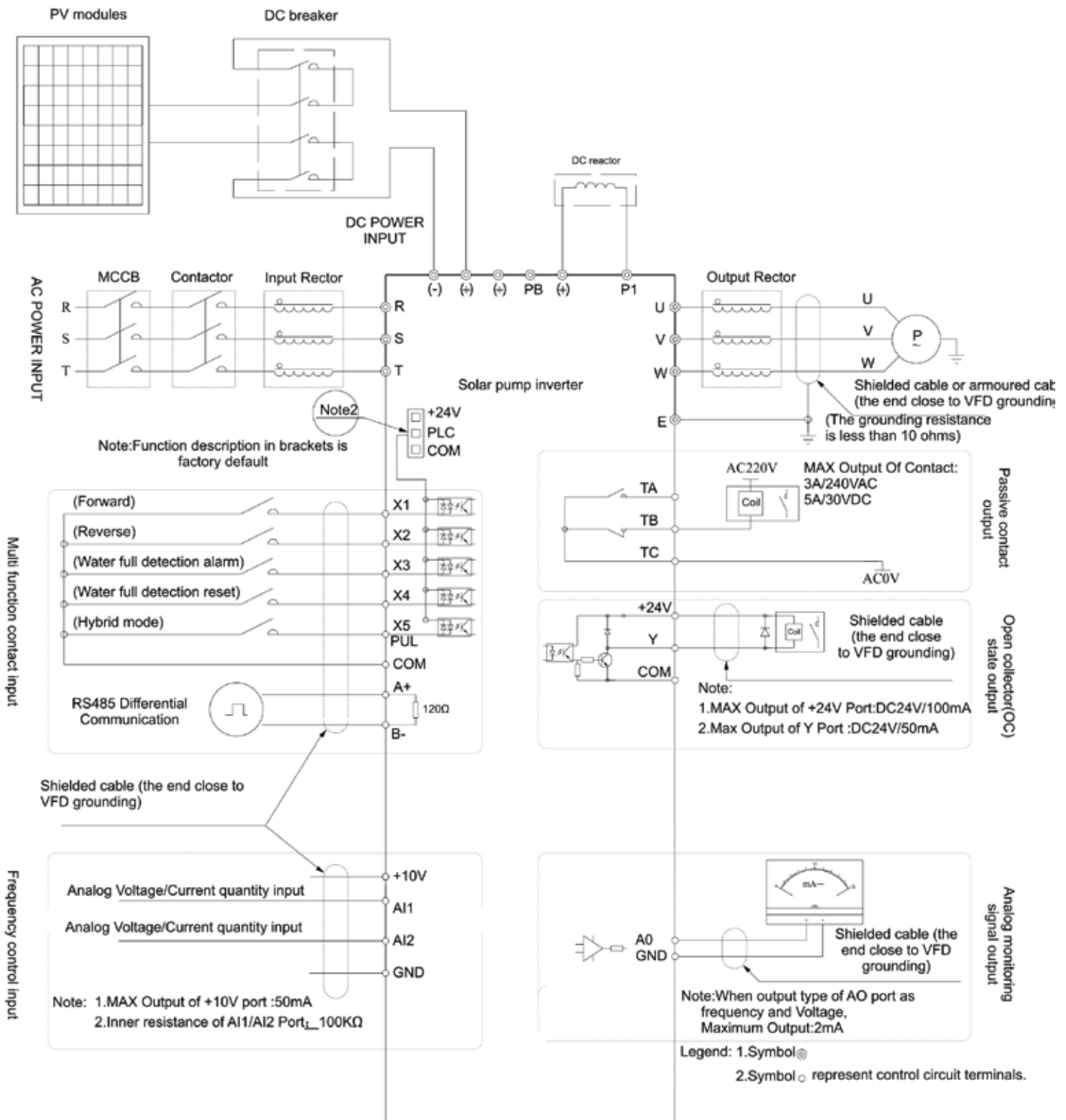
Technical Specification

Solar pump inverter power(KW)	Pump		Max solar power input (KW)	Max DC input voltage V	Recommend Voc voltage (V)	Rated output current (A)	Output frequency(Hz)
	Rated power (KW)	Rated voltage (V)					
D5 series,DC250V to 780VDC input, 3 phase 380-460VAC output							
0.75	0.75	380	1.0	780	620~750	3.0	0-600
1.5	1.5	380	2.2	780	620~750	4.0	0-600
2.2	2.2	380	3.3	780	620~750	6.0	0-600
4	4	380	5.6	780	620~750	10	0-600
5.5	5.5	380	8	780	620~750	13	0-600
7.5	7.5	380	10	780	620~750	17	0-600
11	11	380	14.3	780	620~750	25	0-600
15	15	380	19.5	780	620~750	32	0-600
18.5	18.5	380	23.4	780	620~750	38	0-600
22	22	380	28.6	780	620~750	45	0-600
30	30	380	39	780	620~750	60	0-600
T3 series,DC350V to 780VDC input,3phase 380-460VAC output							
37	37	380	48.1	780	620~750	75	0-600
45	45	380	58.5	780	620~750	90	0-600
55	55	380	71.5	780	620~750	110	0-600
75	75	380	97.5	780	620~750	150	0-600
90	90	380	121.5	780	620~750	180	0-600
110	110	380	148.5	780	620~750	210	0-600
132	132	380	178.2	780	620~750	250	0-600
160	160	380	216	780	620~750	310	0-600
185	185	380	249.75	780	620~750	340	0-600
200	200	380	270	780	620~750	380	0-600
220	220	380	297	780	620~750	415	0-600
250	250	380	337.5	780	620~750	470	0-600
280	280	380	378	780	620~750	510	0-600
315	315	380	425.25	780	620~750	600	0-600
355	355	380	479.25	780	620~750	670	0-600
400	400	380	540	780	620~750	750	0-600
450	450	380	607.5	780	620~750	810	0-600
500	500	380	675	780	620~750	860	0-600
560	560	380	756	780	620~750	990	0-600
630	630	380	850.5	780	620~750	1100	0-600
710	710	380	958.5	780	620~750	1260	0-600

Technical Specification

Solar pump inverter power(KW)	Pump		Max solar power input (KW)	Max DC input voltage V	Recommend Voc voltage (V)	Rated output current (A)	Output frequency(Hz)
	Rated power (KW)	Rated voltage (V)					
D5(H) series,DC250V to 850VDC input, 3 phase 380-460VAC output							
0.75	0.75	380	1.0	850	620~850	3.0	0-600
1.5	1.5	380	2.2	850	620~850	4.0	0-600
2.2	2.2	380	3.3	850	620~850	6.0	0-600
4	4	380	5.6	850	620~850	10	0-600
5.5	5.5	380	8	850	620~850	13	0-600
7.5	7.5	380	10	850	620~850	17	0-600
11	11	380	14.3	850	620~850	25	0-600
15	15	380	19.5	850	620~850	32	0-600
18.5	18.5	380	23.4	850	620~850	38	0-600
22	22	380	28.6	850	620~850	45	0-600
30	30	380	39	850	620~850	60	0-600
T3(H) series,DC350V to 850VDC input,3phase 380-460VAC output							
37	37	380	48.1	850	620~850	75	0-600
45	45	380	58.5	850	620~850	90	0-600
55	55	380	71.5	850	620~850	110	0-600
75	75	380	97.5	850	620~850	150	0-600
90	90	380	121.5	850	620~850	180	0-600
110	110	380	148.5	850	620~850	210	0-600
132	132	380	178.2	850	620~850	250	0-600
160	160	380	216	850	620~850	310	0-600
185	185	380	249.75	850	620~850	340	0-600
200	200	380	270	850	620~850	380	0-600
220	220	380	297	850	620~850	415	0-600
250	250	380	337.5	850	620~850	470	0-600
280	280	380	378	850	620~850	510	0-600
315	315	380	425.25	850	620~850	600	0-600
355	355	380	479.25	850	620~850	670	0-600
400	400	380	540	850	620~850	750	0-600
450	450	380	607.5	850	620~850	810	0-600
500	500	380	675	850	620~850	860	0-600
560	560	380	756	850	620~850	990	0-600
630	630	380	850.5	850	620~850	1100	0-600
710	710	380	958.5	850	620~850	1260	0-600

Standard Wiring Diagram



Note: When connect solar panel, both AC input (R, T) and DC input (+, -) is okay, AC input is prefer.